

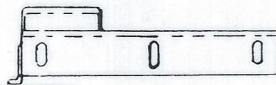
There are three major components to the Retro-Fit Kit. Part A, Part B and new USPS door.

Hardware for Part A include 5 pcs 8/32x3/4 Phillip Pan Head mach screws S/S and 5 pcs 8/32 kepnuts S/S.

Hardware for Part B include 6 pcs 10/24x1/2 Carriage Bolts S/S and 8 pcs 6x5/8 Phillips FH sheet metal screws S/S.

1. Before you can install Part A you must remove the old bracket pre-drill 4 (3/8") holes, two on the top shelf and two on the bottom shelf. The Part A bracket can be used as a template to drill the holes. See figure 1 and 2.
2. An additional 3/8" hole may be necessary on the side. Usually the hole needed on the side will match up with the hole that holds the old bracket. In most cases, the whole mailbox cabinet must be pulled away from the wall to remove the old bracket.
3. Replace the old USPS lock door with the new one. First remove USPS lock and save hardware. This can be done by using a small flat head screw driver to squeeze the hinge pin down against the tension spring, then the door can easily be removed. See figure 3. To install the new door, place the bottom pin in the bottom slot, squeeze the top pin down against the spring and slide the pin in the top hole which holds the pin. See figure 3. To install the new door, place the bottom pin in the bottom slot, squeeze the top pin down against the spring and slide the pin in the top hole which holds the pin.
4. You must have the USPS lock installed on the USPS door before you attempt to install Part B. When placing Part B in position, make sure the left side of the Part B bracket is placed all the way to the left. The edge of the bracket should be directly against the ridge of the inside of the new USPS door. See figure 4. Insert the carriage bolts with the round head through the holes from the outside of the USPS door and through the matching holes in part B. Lock down the carriage bolts with nuts and washers on the inside of the USPS door. See figure 5. The flathead screws are recommended but optional and can be installed by pre-drilling holes with a 1/8" drill bit. Depth of these holes is approximately 5/16". See figure 6. Once the Part # B bracket has been installed, the cabinet will not be able to be locked or unlocked. Only a United States Postal Service employee will be able to perform this function.
4. Open and close the master door several times to verify proper operation of lock and door. See figure 7.

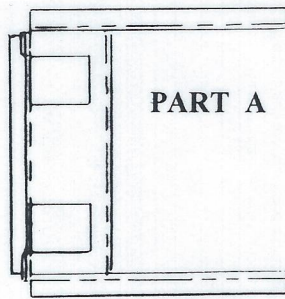
TOP



Use 1 Phillips head bolt with nut and washer.



SIDE

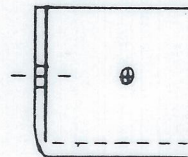


FRONT

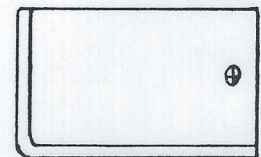
PART A

Use 4 phillips head bolts with nuts and washer.

OLD LOCKING BRACKET

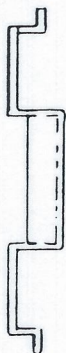
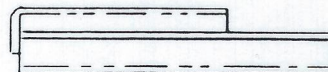


SIDE

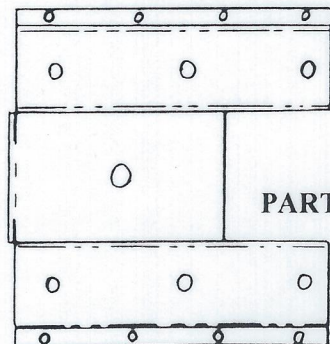


FRONT

TOP



SIDE



FRONT

PART B

Carriage bolts with roundhead used on part B
The Carriage bolts used will also fit through
The new USPS provided with kit.